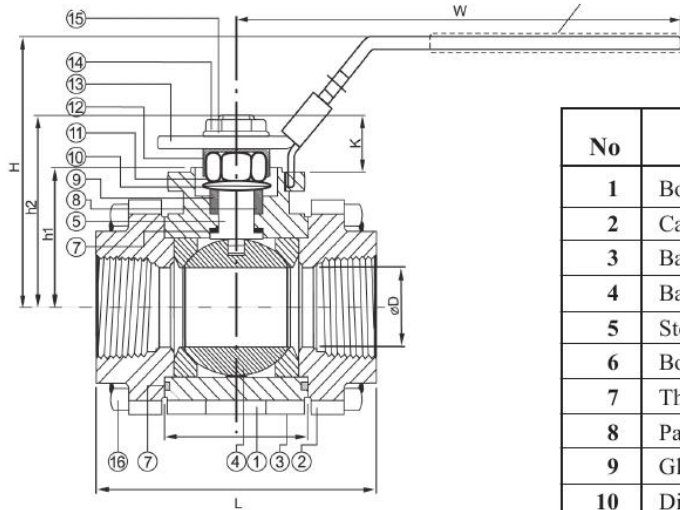
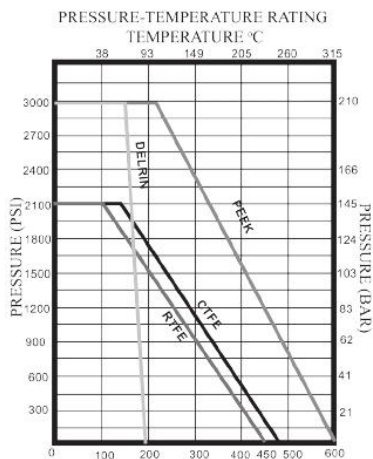




BALL VALVE FULL BORE SCREWED END PN 210 - 441096



No	Part	Material
1	Body	Stainless steel SS316
2	Cap	Stainless steel SS316
3	Ball seat	PEEK
4	Ball	Stainless steel SS316
5	Stem	Stainless steel SS316
6	Body Seal	GRAPHITE
7	Thrust Washer	
8	Packing	
9	Gland ring	AISI 304
10	Disc spring	AISI 301
11	Packing nut	AISI 304
12	Lock Pad	
13	Handle	
14	Handle nut	
15	Spring Washer	
16	Bolt	



Variants:

Various actuators
Various Seatings

Other dimensions/materials on request

DN	D	L	H	K			Max working- pressure acc. to above chart	Weight Kg
8	14,3	74,8	45	15,3				0,7
10	14,3	74,8	45	15,3				0,9
15	14,3	74,8	49	15,3				1,5
20	20,7	80	52	16,8				1,9
25	25,4	93,1	72	17				2,4
32	31,5	109,5	78	29,6				2,8
40	38,0	120	86	29,6				3,4
50	50,8	139,6	95	29,6				5,0