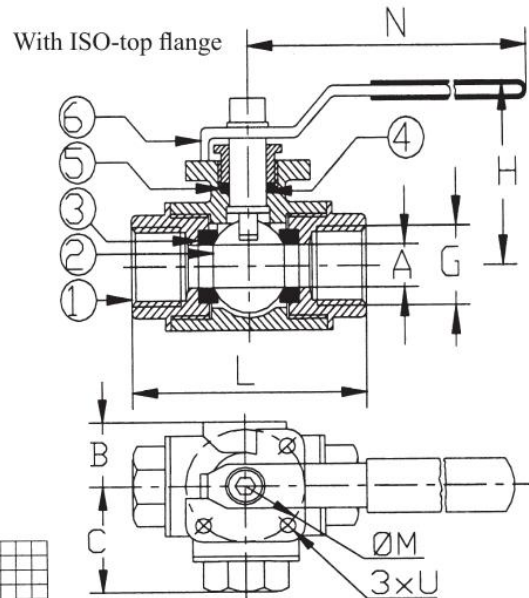


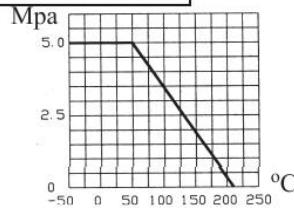
3 - WAY BALL VALVE SCREWED END PN40 - 448095

| No | Part | Material |
|----|--------------|-----------------------|
| 1 | Body | Stainless steel SS316 |
| 2 | Ball | Stainless steel SS316 |
| 3 | Seat ring | PTFE 15% glasfibre |
| 4 | Stem | Stainless steel SS316 |
| 5 | Stem packing | PTFE |
| 6 | Lever | Stainless steel SS304 |
| | | |
| | | |
| | | |



Variants:

- Ball design L-port
- Ball design T-port
- Various actuators
- Seating Carbon filled PTFE
- Other dimensions/materials on request



| DN | G | A | B | C | L | H | Max working-pressure | | Weight Kg |
|----|--------|------|----|------|-----|-----|----------------------|--|-----------|
| | | | | | | | acc. to above chart | | |
| 8 | 1/4" | 9,5 | 22 | 39,5 | 79 | 63 | | | 0,8 |
| 10 | 3/8" | 9,5 | 22 | 39,5 | 79 | 63 | | | 0,8 |
| 15 | 1/2" | 12,0 | 22 | 39,5 | 79 | 63 | | | 0,8 |
| 20 | 3/4" | 15,0 | 28 | 44,0 | 88 | 75 | | | 1,2 |
| 25 | 1" | 20,0 | 31 | 54,0 | 108 | 82 | | | 1,7 |
| 32 | 1 1/4" | 25,0 | 34 | 62,0 | 108 | 89 | | | 2,8 |
| 40 | 1 1/2" | 32,0 | 40 | 67,5 | 135 | 90 | | | 4,0 |
| 50 | 2" | 40,0 | 48 | 82,0 | 164 | 100 | | | 6,8 |
| | | | | | | | | | |
| | | | | | | | | | |
| | | | | | | | | | |
| | | | | | | | | | |
| | | | | | | | | | |